

SERVICE & PARTS MANUAL – ELECTRIC SCISSOR TABLE

MODELS: SC-800-S-E SC-1250-S-E SC-1000-S-E
SC-500-D-E SC-800-D-E SC-500-T-E

IMPORTANT NOTICE:

PLEASE PASS THIS LEAFLET TO YOUR SAFETY OFFICER BEFORE USE AND KEEP IT IN A SAFE PLACE.

READ THOROUGHLY BEFORE USE AND FAMILIARISE YOURSELF WITH THE TRUCK AFTER READING THESE INSTRUCTIONS.

TEST CERTIFICATES SHOULD BE PASSED TO THOSE RESPONSIBLE FOR YOUR REGISTER OF LIFTING EQUIPMENT AND BE RETAINED FOR SCRUTINY BY A FACTORY INSPECTOR, INSURANCE Co. ETC.

NO LIFTING GEAR SHOULD BE PUT INTO USE WITHOUT A VALID TEST CERTIFICATE, NOR USED BY UNTRAINED STAFF WHO ARE NOT FULLY AWARE OF THE INSTRUCTIONS FOR SAFE USE.

TECHNICAL DETAILS

	SC-800-S-E	SC-1250-S-E	SC-1000-S-E	SC-500-D-E	SC-800-D-E	SC-500-T-E
BUILT TO	EN 1570	EN 1570	EN 1570	EN 1570	EN 1570	EN 1570
MAX CAP	800 kg	1250 kg	1000 kg	500 kg	800 kg	500 kg
TOP SIZE	840 mm x 1350 mm	840 mm x 1350 mm	1000mm x 2000mm	840 mm x 1350 mm	840 mm x 1350 mm	840 mm x 1350 mm
CLOSED HEIGHT	360 mm	360 mm	360 mm	490 mm	490 mm	650 mm
RAISED HEIGHT	1050 mm	1050 mm	1050 mm	1900 mm	1900 mm	2900 mm
HANDLE HEIGHT	1010 mm	1010 mm	1010 mm	1010 mm	1010 mm	1010 mm
SCISSOR ARMS	Single	Single	Single	Double	Double	Triple
WEIGHT	270 kg	278 kg	397 kg	352 kg	363 kg	420 kg

SAFETY

This table has been built to BS 5323 and every table is accompanied by a Test Certificate. PLEASE read and KEEP it in a safe place. You may be asked to present it by your insurance company or factory inspector. For safety the table has been designed to give: -

- 30mm gap between the arms.
- 50mm gap between the arms and frame.
- Flow control cartridge in ram. Even if the hydraulic hose is cut the table will still descend at a safe speed.
- If the slow lowering cartridge happens to become activated, an investigation needs to be carried out to determine the cause.
- Load should be secured to the table to prevent it from falling off when lifting over 2000mm

IT IS DANGEROUS TO WORK UNDER THE TABLE TOP WHEN THE PLATFORM IS IN THE RAISED POSITION.

ONLY AUTHORIZED PERSONS SHOULD BE ALLOWED TO OPERATE THIS TABLE.

ANY DAMAGE, OR IF THE TABLE DOES NOT PERFORM CORRECTLY, SHOULD BE REPORTED IMMEDIATELY AND USE DISCONTINUED.

SAFETY SHOES SHOULD BE WORN WHEN USING THIS PRODUCT

The table is fitted with a safety cut off bar. Should the bar hit an obstruction when lowering, the table will stop lowering immediately.

ASSEMBLY

This product is normally assembled before delivery.

DISPOSAL OF PRODUCT

Once the product has completed its working life, contact your local authority to dispose of it in the correct manner. (Materials used to build the table : Steel, Plastic, Oil)

UNFORESEEN USE

- **DO NOT** use on ramps or slopes, only on flat surfaces
- **ALWAYS** check for damage. Any damage or fault must be reported immediately
- **DO NOT** use if damaged or faulty
- **DO NOT** work under the table top when the platform is in the raised position
- **DO NOT** remove warning labels
- **DO NOT** lift more than the rated capacity
- **ALWAYS** apply the brake when stationary
- **ENSURE** people are clear of the table before lowering
- **DO NOT** use with the battery connected
- **DO NOT** smoke in the area when the battery is being charged
- **ENSURE** that the table is fully secure during maintenance as it may fall if knocked or moved
- **BEWARE** that fingers could be trapped when lowering the table lid
- **ALWAYS** secure load to table top when lifting above 2000mm

Please note, we strongly advise against the use of this product in wet or damp conditions. If you do need to use in a wet or damp environment, please contact Customer Services.

LOADING THE TABLE TOP

This table has been manufactured and tested to take the full load spread over the table top. Half the load over half the platform length, one third of the load over one half of its width. **This loading must not be exceeded.** Goods should be secured to the table to prevent them from falling off when lifting above 2000mm

MAINTENANCE CHECKS & ADJUSTMENTS

With the table fully lowered, the top hinges to allow access to the mechanism. All hinged points have nylon bearings and the ball races are sealed, therefore, little maintenance should be required.

Daily: The machine should be checked daily by the operator for obvious damage and oil leaks. Faults should be reported.

Monthly: Check the oil for serious oil leaks (with hydraulic units some oil may escape around the cylinder which lubricates the seal, if in doubt check with engineer). Check that the brake is in working order.

Annually: The table should be re-tested.

CHARGING

The scissor table is provided with a separate electronic battery charger and this should be used to top up the battery charge regularly. The interval depends upon the extent of use.

CHARGER

- Supply 220/240 Volt 50 Hz 85 Watts
- Protected by automatic breaker
- Use 6 Amp fuse
- Outputs 4 Amp 12 Volt (6 Amp R.M.S.)

PROCEDURE FOR CHARGING

PLEASE OBSERVE NORMAL SAFETY PRECAUTIONS WHEN CHARGING BATTERIES

1. Connect to correct terminal: red to + terminal, black to - terminal.
2. Switch on the battery charger.
3. Leave to charge.
4. Switch off the battery charger.
5. Disconnect the charger from the battery.

IMPORTANT NOTES

The scissor table should not be used during charging

The battery cannot be overcharged if the electronic charger supplied is used

OPERATING INSTRUCTIONS

Control: The electric pump and hydraulic circuits are controlled via a push button remote switch.

FILLING WITH OIL

The hydraulic pump is filled with TELLUS 22 or ISO VG22 equivalent. It will be necessary to top up the hydraulic oil occasionally via the filler. Only fill with enough oil to allow the table to lift to full height - overfilling will cause leakage.

To top up with oil, adjust the mechanism or work on any part of the pump, the table should be completely lowered and the top hinged back for access to the hydraulic systems.

SPARE PARTS – INITIAL EMERGENCY SPARES

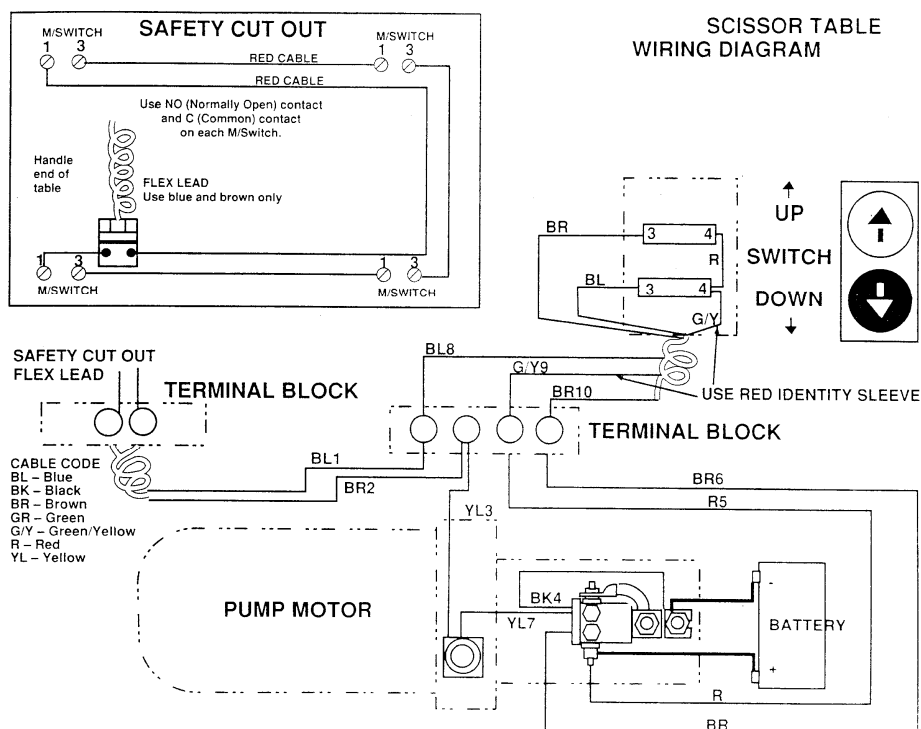
QTY	SC-500-T-M	ALL OTHER MODELS	DESCRIPTION
1	WH20-412	WH20-412	Braked Castor Bracket
1	WH20-411	WH20-411	Unbraked Castor Bracket
1	OL18	OL18	Bottle of Hydraulic Oil
1	PH20-420	PH20-420	Pump Seal Kit
1	HY475	HY443	Ram Seal Kit
2	WH10-120	WH10-120	Nylon Wheel

IMPORTANT: When ordering spare parts please specify the model, serial number and capacity.

FAULT FINDING CHART

FAULT	REMEDY
Will not lift	Check that the battery is fully charged. Check the battery terminal.
If fault remains	Check Oil level. This should be 20 mm below the filler in lowered position.
If fault remains	Check the lead from the battery to the motor.

WIRING DIAGRAM



PARTS BREAKDOWN

ITEM	PART NO	QTY	MODEL
11	F20-456	1	SC-800-S-E / SC-1250-S-E / SC-500-D-E / SC-800-D-E / SC-500-T-E
11	F20-465	1	SC-1000-S-E
12	F20-451	1	SC-800-S-E / SC-1250-S-E / SC-500-D-E / SC-800-D-E / SC-500-T-E
12	F20-460	1	SC-1000-S-E
13	HY455	1	SC-800-S-E
13	HY455	2	SC-1250-S-E / SC-1000-S-E
13	HY449	1	SC-500-D-E
13	HY449	2	SC-800-D-E
13	HY447	2	SC-500-T-E
14	F20-400	1	SC-800-S-E / SC-1250-S-E / SC-1000-S-E
14	F20-401	1	SC-500-D-E / SC-800-D-E
14	F20-400 / F20-401	1 EACH	SC-500-T-E
15	WH10-120	2	ALL MODELS
16	WH20-412	1	ALL MODELS
17	WH20-411	1	ALL MODELS
18	F20-302	1	ALL MODELS
19	E-652	4	ALL MODELS
20	HY436	1	ALL MODELS
21	HY435	1	ALL MODELS
22	PH40-586	1	ALL MODELS
23	E-591	2	ALL MODELS
24	E-593	1	ALL MODELS

ET-CH 003 Euro plug Battery Charger all models
 ET-CH-004 UK Plug Battery Charger all models

