

# **SERVICE & PARTS MANUAL - MOBILE SCISSOR TABLE**

---

## **MODEL SC-450-D-M / SC1450**

### **IMPORTANT NOTICE**

---

**PLEASE PASS THIS LEAFLET TO YOUR SAFETY OFFICER BEFORE USE AND KEEP IT IN A SAFE PLACE.**

**READ THOROUGHLY BEFORE USE AND FAMILIARISE YOURSELF WITH THE TRUCK AFTER READING THESE INSTRUCTIONS.**

**TEST CERTIFICATES SHOULD BE PASSED TO THOSE RESPONSIBLE FOR YOUR REGISTER OF LIFTING EQUIPMENT AND BE RETAINED FOR SCRUTINY BY A FACTORY INSPECTOR, INSURANCE COMPANY ETC.**

**NO LIFTING GEAR SHOULD BE PUT INTO USE WITHOUT A VALID TEST CERTIFICATE, NOR USED BY UNTRAINED STAFF WHO ARE NOT FULLY AWARE OF THE INSTRUCTIONS FOR SAFE USE.**

### **TECHNICAL DETAILS SC-450-D-M**

---

|                        |                  |
|------------------------|------------------|
| <b>BUILT TO:</b>       | EN 1570          |
| <b>MAX CAPACITY:</b>   | 450 kg           |
| <b>TOP SIZE:</b>       | 610 mm x 1030 mm |
| <b>CLOSED HEIGHT:</b>  | 295 mm           |
| <b>RAISED HEIGHT:</b>  | 1550 mm          |
| <b>HANDLE HEIGHT:</b>  | 925 mm           |
| <b>UNLADEN WEIGHT:</b> | 143 kg           |

### **SAFETY**

---

This table has been built to BS 5323 and every table is accompanied by a Test Certificate. **Please** read and **keep** it in a safe place. You may be asked to present it by your insurance company or factory inspector. For safety the table has been designed to give: -

- 30mm gap between the arms.
- 50mm gap between the arms and frame.
- Flow control cartridge in ram. Even if the hydraulic hose is cut the table will still descend at a safe speed.
- Automatic stop lowering if the pedal is released.
- If the slow lowering cartridge happens to become activated, an investigation needs to be carried out to determine the cause.

**IT IS DANGEROUS TO WORK UNDER THE TABLE TOP WHEN THE PLATFORM IS IN THE RAISED POSITION.**

**ONLY AUTHORIZED PERSONS SHOULD BE ALLOWED TO OPERATE THIS TABLE.**

**SAFETY SHOES SHOULD BE WORN WHEN USING THE PRODUCT**

**ANY DAMAGE, OR IF THE TABLE DOES NOT PERFORM CORRECTLY, SHOULD BE REPORTED IMMEDIATELY AND USE DISCONTINUED.**

There are no special handling requirements. The table must not be inverted or put on its side.

### **ASSEMBLY**

---

This product is normally assembled before delivery.

## UNFORESEEN USE

---

- **DO NOT** use on ramps or slopes, only on flat surfaces
- **ALWAYS** check for damage. Any damage or fault should be reported immediately
- **DO NOT** use if damaged or faulty
- **DO NOT** work under the tabletop when the platform is in the raised position
- **DO NOT** remove warning labels
- **DO NOT** lift more than the rated capacity
- **ALWAYS** apply the brake when stationary
- **ENSURE** people are clear of the table before lowering
- **ENSURE** that the table is fully secure during maintenance as it may fall if knocked or moved
- **BEWARE** that fingers could be trapped when lowering the table lid

Please note we strongly advise against the use of this product in wet or damp conditions.  
If you do need to use this product in wet or damp environment please contact Customer Services.

## DISPOSAL OF PRODUCT

---

Once the product has completed its working life, contact your local authority to dispose of it in the correct manner.  
(Materials used to build the table : Steel, Plastic, Oil)

## LOADING THE TABLE TOP

---

This table has been manufactured and tested to take the full load spread over the table top. Half the load over half the platform length, one third of the load over one half of its width. **This loading must not be exceeded.**

**Raising:** The table lifts by operating the foot operated jacking pedal.

**Lowering:** The table is lowered by operating the lowering pedal. The oil passes through a flow control cartridge and this slows the lowering speed, irrespective of the load on the table.

## MAINTENANCE CHECKS & ADJUSTMENTS

---

With the table fully lowered, the top hinges to allow access to the hydraulics.  
All hinged points have nylon bearings and the ball races are sealed, therefore, little maintenance should be required.

**Daily:** The machine should be checked daily by the operator for obvious damage and oil leaks. Faults should be reported.

**Monthly:** Check the oil for serious oil leaks (with hydraulic units some oil may escape around the cylinder, which lubricates the seal, if in doubt check with engineer). Check that the brake is in working order.

**Annually:** The table should be re-tested.

**Note:** Table should be re-tested after any repairs have been carried out.

## FILLING WITH OIL

---

The hydraulic pump is filled with TELLUS 22 or SISO VG22 equivalent.

It will be necessary to top up the hydraulic oil occasionally via the filler. Only fill with enough oil to allow the table to lift to full height - overfilling will cause leakage. To top up with oil, adjust the mechanism or work on any part of the pump, the table should be completely lowered and the top hinged back for access to the hydraulic systems.

## SPARE PARTS – INITIAL EMERGENCY SPARES

---

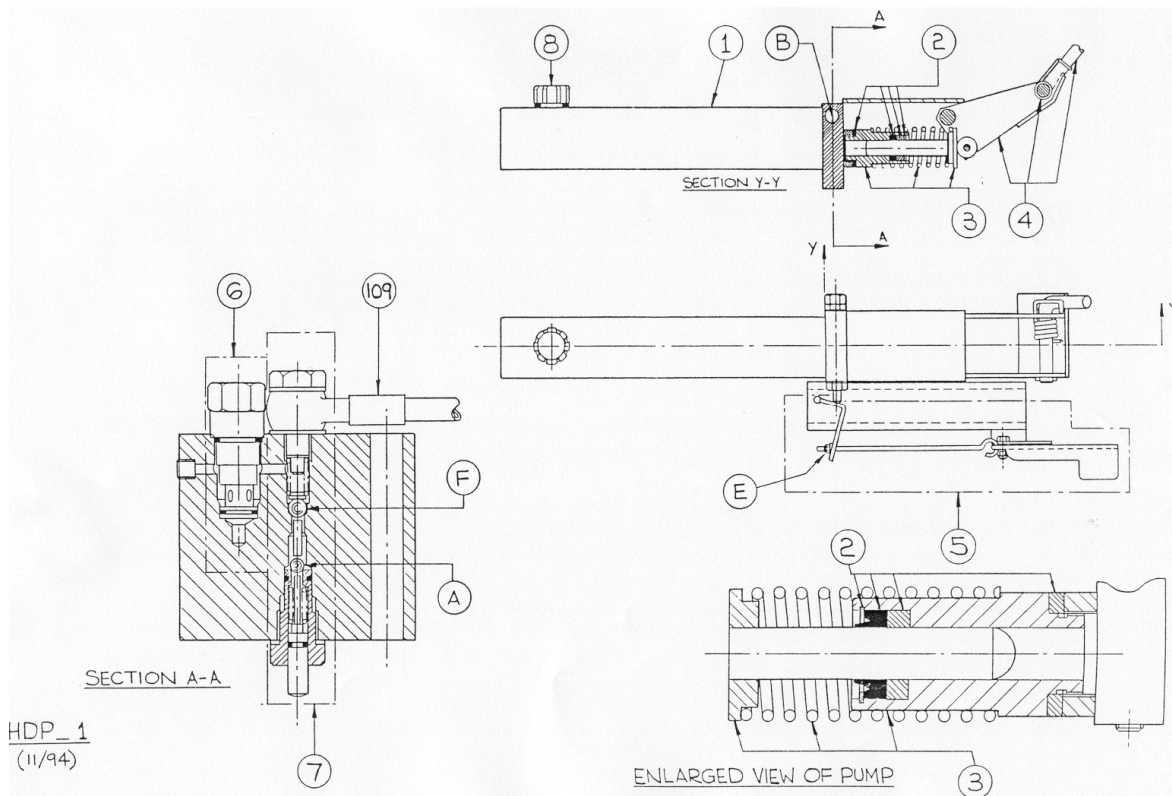
| QTY | PART NO  | DESCRIPTION             |
|-----|----------|-------------------------|
| 2   | WH20-312 | Braked Castor Bracket   |
| 2   | WH20-407 | Poly fixed wheel        |
| 1   | OL18     | Bottle of hydraulic oil |
| 1   | PH20-124 | Sets of seals           |
| 2   | WH20-210 | Poly Wheel (castor)     |

**IMPORTANT:** When ordering spare parts please specify the model, serial number and capacity.

## FAULT FINDING CHART

| FAULT                              | CAUSE                        | REMEDY                                                                                                   |
|------------------------------------|------------------------------|----------------------------------------------------------------------------------------------------------|
| Will not raise when jacking        | Air in hydraulics            | Keep the lowering lever pressed down while jacking                                                       |
| If fault remains                   | Suction ball 'A' not seating | Lower the table fully, hinge lid up & make sure that plunger 'B' is coming fully out and moves correctly |
| If fault remains                   | Suction ball 'A' not seating | Unscrew nut 'E' a few turns                                                                              |
| Does not jack to full height       | Air in hydraulics            | Keep the lowering lever pressed down while jacking                                                       |
| If fault remains                   | Not enough hydraulic oil     | Lower fully, hinge lid & check oil level. Fill if required                                               |
| Will not lift full capacity        | Load too heavy               | Check weight of load                                                                                     |
| Sinks slowly                       | Ball not seating             | Reseat ball 'F'                                                                                          |
| Table raises & lowers on each jack | Air in hydraulics            | Keep the lowering lever pressed down while jacking                                                       |
| If fault remains                   | Ball not seating             | Reseat ball 'F'                                                                                          |

## PUMP UNIT



HDP\_1  
(11/94)

| ITEM | QTY | PART NUMBER |
|------|-----|-------------|
| 1    | 1   | PH20-400    |
| 2    | 1   | PH20-420    |
| 3    | 1   | PH20-411    |
| 4    | 1   | L20-251     |
| 5    | 1   | L20-250     |
| 6    | 1   | PH20-416    |
| 7    | 1   | SC-SK-001   |
| 8    | 1   | PH20-415    |
| 109  | 1   | HY466       |

# FRAME

| ITEM         | QTY | PART NUMBER |
|--------------|-----|-------------|
| 100          | 1   | F20-286     |
| 101          | 1   | F20-290     |
| 102          | 1   | F20-287     |
| 104          | 2   | WH20-312    |
| 105          | 1   | F20-279     |
| 106          | 2   | WH20-407    |
| 107          | 4   | BE10-071    |
| 109          | 1   | HY466       |
| RAM CYLINDER | 1   | HY442       |

